

DMO-GO Declutchable Manual Override Gear Operator

DMO-GO Series

For use with **Automated Valves** and **Fail Safe Assemblies**



The DMO-GO is designed to mount between a valve and actuator as a means of operating the valve in loss of power, or air supply, or as a loading and reset device for fail-safe assemblies. This heavy duty gear drive is readily engaged and disengaged by using a spring-loaded locking pin and easily accessible positioning lever. A unique air control safety feature closes the air supply in the manual position to prevent unwanted actuation during operation. Available in output torques ranging from 1,300 to over 35,000 in-lbs.

Standard Features and Benefits

- Heavy Duty Epoxy Coated Carbon Steel Construction
- IP67 Weatherproof Environmental Rating
- ISO 5211 Mounting Pad for Direct Coupling of Actuators
- Fully Enclosed Self-Lubricated High Torque Gear Drive
- Easy-Access Gear Engagement/Disengagement Mechanism with Spring-Loaded Locking Pin
- Patented Pneumatic Override Control to Prevent Valve Actuation in Manual Position
- Dual External Travel Stops for Easy In-Field Adjustments

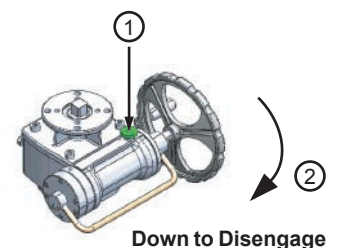
Options

- Complete Valve Automation and Control Packages
- Fail-Safe Fusible Link Assemblies
- Handwheel Lock-Out Device

Mode of Operation

Manual (engaged) to Auto (disengaged)

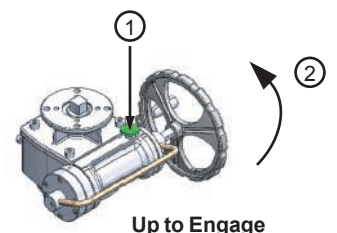
1. Pull the Locking Pin upward to unlock the Shift Handle
2. Release the Locking Pin and lower the Shift Handle fully into the Auto position
3. Pin will lock in place when position has been reached



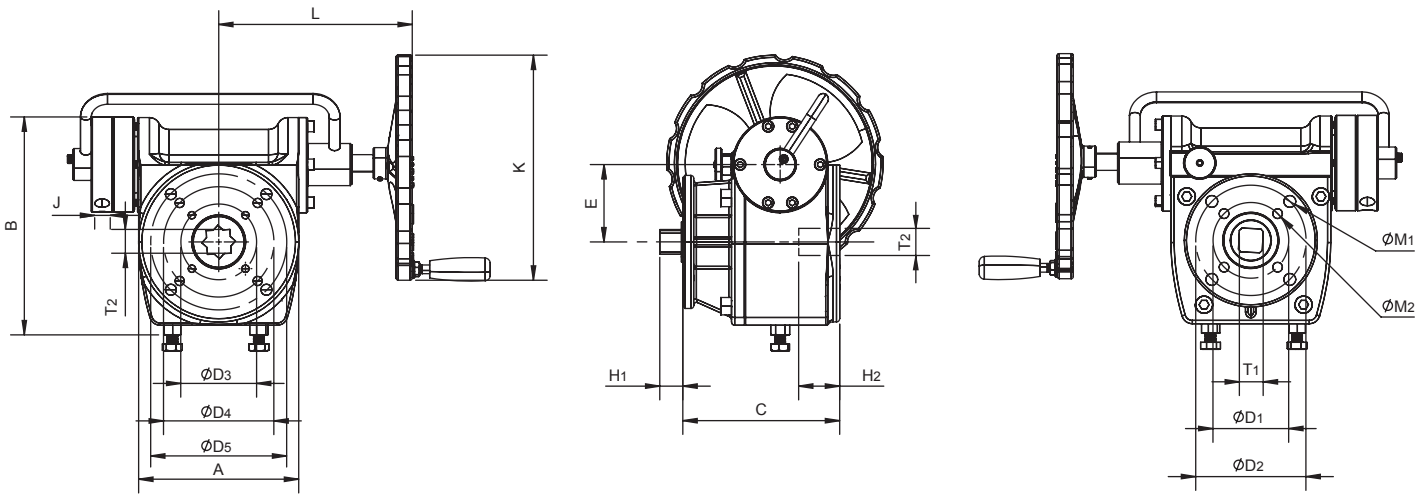
Down to Disengage

Auto (disengaged) to Manual (engaged)

1. Pull the Locking Pin upward to unlock the Shift Handle
2. Release the Locking Pin and raise the Shift Handle fully into the Manual position
3. Pin will lock in place when position has been reached



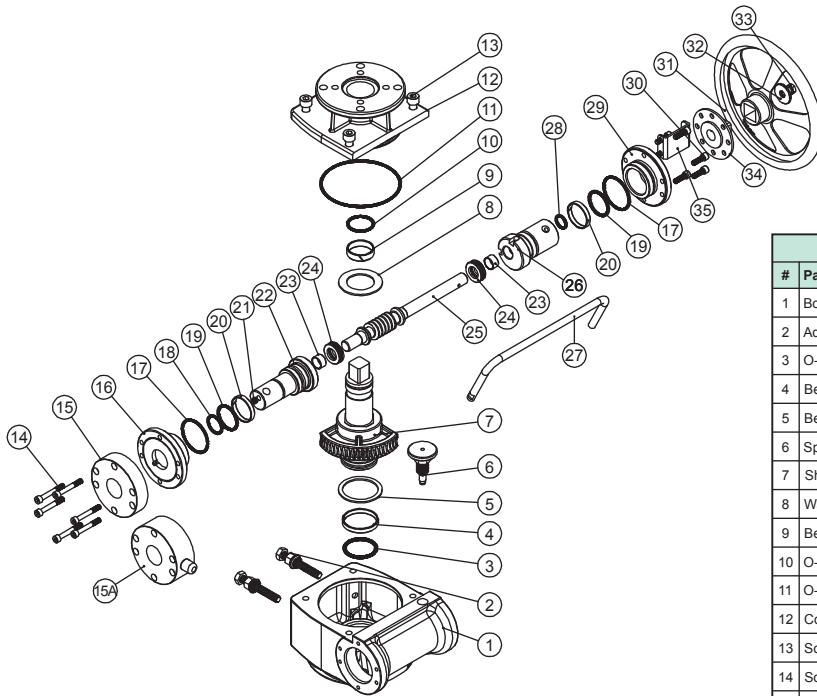
Up to Engage



Dimensions (mm)

Model	A	B	C	D1	D2	D3, D4, D5	E	L	M1	M2	T1	T2	H1	H2	K	J	Input Torque (in-lbs)	Max. Output Torque (in-lbs)
015A	100	120	104	ø50	ø70	F05/F07	44.5	121	ø7	ø9	17	17	14	25	ø160	1/8"NPT	150	1328
015B	100	120	104	ø50	ø70	F05/F07	44.5	121	ø7	ø9	17	17	14	25	ø200	1/8"NPT	195	1770
060A	148	192	145	ø70	ø102	F07/F10/F12	71	174	ø9	ø11	22	22	19	30	ø200	1/4"NPT	372	5310
090A	148	192	145	ø70	ø102	F07/F10/F12	71	174	ø9	ø11	27	27	19	30	ø250	1/4"NPT	620	7966
160A	196	260	192	ø102	ø140	F10/F14	107.5	282	ø11	ø17	36	36	34	40	ø350	1/4"NPT	709	14161
350B	255	334	181	ø165	—	F12/F16	123	270	ø22	—	46	46	45	176	ø500	1/4"NPT	1682	29207
350B	255	334	181	ø165	—	F12/F16	123	270	ø22	—	46	46	45	176	ø600	1/4"NPT	2036	35403

Due to continuous product development, information may change without notice.



Components			
#	Part Name	Material	Qty.
1	Body	WCB	1
2	Adjustable Travel Stop	304SS / NBR	2
3	O-Ring	NBR	1
4	Bearing	POM	1
5	Bearing	POM	1
6	Spring Loaded Lock Pin	Aluminum / Steel	1
7	Shaft	45	1
8	Washer	POM	1
9	Bearing	POM	1
10	O-Ring	NBR	1
11	O-Ring	NBR	1
12	Cover	WCB	1
13	Screw	304SS	4
14	Screw	304SS	6
15	Outside Cap	45	1
15A	Air Supply Control*	Aluminum / C4	1
16	Left Cap	45	1
17	O-Ring	NBR	2

* Optional

Components			
#	Part Name	Material	Qty.
18	O-Ring	NBR	1
19	O-Ring	NBR	2
20	Eccentric Axle Bearing	POM	2
21	Bolt	304SS	1
22	Eccentric Axle	45	1
23	Bearing	Steel & PTFE	2
24	Thrust Ball Bearing	Steel	2
25	Worm	45	1
26	Eccentric Axle	45	1
27	Shift Handle	Steel / Stainless Steel	1
28	O-Ring	NBR	1
29	Right Cap	45	1
30	Screw	304SS	6
31	Handle Wheel	Nodular Cast Iron	1
32	Washer	304SS	1
33	Bolt	304SS	1
34	Lock-Out Disc*	45	1
35	Lock-Out Bracket*	45	1

* Optional